

# Termites Work Year Round

Fall 2024



Sure, it might seem that termites would only be active during warmer weather, but our technicians and inspectors have found live termites during even the coldest Kansas winters. What this means to you as a property owner is that you should have your home inspected annually for the presence of a termite infestation. Call our office today to schedule an appointment for a free termite inspection of your home (if you are buying or selling property, there is a \$75.00—\$95.00 fee for a real estate inspection).



ADVANCE  
TERMITE & PEST CONTROL, INC.

SPOTLIGHT ON FALL  
PEST CONTROL

## Black Widow Spiders

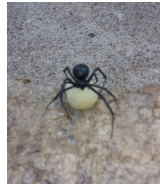
A mature female is a globe-shaped, black, shiny spider with a red or orange marking or hourglass on the underside of her abdomen. Males are smaller, brown and not a significant threat to people. A strong, irregular web indicates the presence of a black widow spider. They weave egg sacs which may contain up to 300 eggs. Removal or destruction of the egg sacs may help control the population. This spider is resistant to many insecticides.

### *Signs & Symptoms:*

The initial sensation may be painful, with little local reaction. Later, pain, cramping and rigidity may appear in the shoulders, back, chest or abdomen. Other symptoms include nausea, vomiting, headache, anxiety and hypertension.

### *First Aid:*

Clean the site well with soap and water. Apply a cool compress over the bite location and keep the affected limb elevated to about heart level. Aspirin or Tylenol may be used to relieve minor symptoms. Treatment in a medical facility may be necessary for children less than 5 years old or for adults with severe symptoms. Medical treatment is always advised when a black widow spider bite is suspected.



## PERSONAL DEVELOPMENT

Truth is, we're almost always going to find what we're looking for. If our attention is zeroed in on shortcomings, we'll certainly find lots to complain about. If we're looking for something to be critical of - in another person, in our way of life, in where we live, or what we do for a living - we will absolutely, positively find plenty of things that are less than perfect.

On the other hand, if we look for what is right, we'll most likely find it. I challenge you to make this shift in thinking. You can focus on hundreds of irritants because they are there - or you can focus on things that you like.

*- Don't Sweat the Small Stuff*



**We can help with your rodent control needs too!**

**ADVANCE  
TERMITE & PEST  
CONTROL, INC.**

2515 E. 14th Avenue  
Hutchinson KS 67501

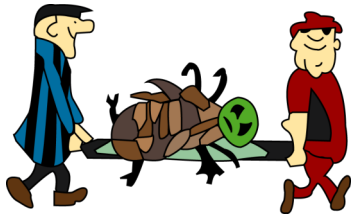
Phone: 620.662.3616

Fax: 620.662.0252

e-mail: [helen@advancepest.com](mailto:helen@advancepest.com)

[www.advancepest.com](http://www.advancepest.com)

*Service Above and Beyond Your  
Expectations*



**You can now pay your in-  
voices on our website:**

[www.advancepest.com](http://www.advancepest.com)

**Weighing the Consequences of Saying “Yes”  
Too Often**

Saying “yes” too often can be a terrible energy drain. The best antidote is to learn to say “no” once in a while. It’s human nature to want to be liked, so when people ask for our time and energy, we too often end up saying “yes” when we can’t realistically deliver without undergoing a great deal of stress.

Saying “yes” to help someone is always a worthy aim, but saying “yes” to a request or demand that threatens to push you past your energy limits is the wrong thing to do. If you say “no”, it doesn’t mean you’re a slackard; it means that you have a sense of mission, values and personal responsibility.

**T**his newsletter is intended to bring you information to make your life easier and more enjoyable. Please pass this Newsletter along to friends and relatives who might need our services.

**I**f you have questions or comments, please call our office (620.662.3616) or send us an e-mail ([advance@advancepest.com](mailto:advance@advancepest.com)).

**W**e sincerely appreciate your business!

*Advance Termite & Pest Control has been in business since 1985  
and our certified technicians are well qualified to address all your  
insect, termite, rodent, wildlife and lawn care needs.*

# TIDBITS

Fleas can jump 7-8 inches vertically and 14-16 inches horizontally.  
Certain species of rats can tread water for up to 3 days.  
Rats can swim over a mile in open water.  
Some species of rats can swim through sewer pipes.

No act of kindness, no matter how small, is ever wasted.

Let us sacrifice our today so that our children can have a better tomorrow.

Fiction: Carpenter ants eat wood and process it just like termites.  
FACT: Termites eat wood. Carpenter ants build tunnels and use wood to build nests to reproduce.

“If you do what you’ve always done, you’ll get what you’ve always gotten.”

“Nothing that does not occur on a daily basis will ever dominate your life.”



## *These Ladies Are a Nuisance*

About the time of first frost, Ladybugs or Ladybird Beetles may gather on the southern or western sides of your home. They can come into your house through any crack, crevice, open window or hole, and remain inactive until spring. They don’t cause any problems except for their presence, sometimes in great numbers! They become active when it gets warm again and try to find their way back outside, where they continue their beneficial work of eating lots of other insects, including major plant pests. They may become active during any warm period during the winter, and often fly to windows or lights at those times. Some kinds of Ladybugs, like the common, wide-spread Multi-colored Asian Ladybug, can come into a house in unbelievable numbers. The best thing to do when they become active in the spring is to help them get outside, alive. You could vacuum the beetles, then remove the vacuum bag, and put that bag in your trash. But it is better to do a preventive careful examination and sealing of all likely entry points before the first cold nights. This can keep most or all of these pests out. For heavy infestations, you may need our help for ongoing surveillance and possibly to treat for any associated secondary pest problems that occur, such as carpet beetles or booklice.