



SPOTLIGHT ON WINTER

Winter 2019

ADVANCE Termite & Pest Control, Inc.
2515 E. 14th Avenue, Hutchinson KS 67501
620.662.3616



TERMITES IN THE WINTER? You bet!

ADVANCE Termite & Pest Control employs knowledgeable professionals to help you solve your pest management problems. Although many pests are dormant during the winter months, this is a good time of year to have one of our technicians provide a termite inspection for you. Termites are not active in the winter in Kansas; however, it is often during the winter when a termite infestation becomes more evident in homes.

Our company has been in business since 1985 and our certified applicators have an average of 15 years' experience in termite and pest management.

Our company is fully insured and licensed by the Kansas Department of Agriculture, and all of our employees are certified Kansas applicators who receive ongoing training as the pest control industry continues to evolve in this technological age.

Call our office to schedule a termite inspection this winter so that you can get the jump on termites before spring!



Antennae straight or curved with segments beadlike

Middle part of body broad

Wings similar in size and shape



Termite

Antennae bent or "elbowed"

Middle part of body narrow

wings unlike in size and shape



Ant



Everyone is a genius. But if you judge a fish on its ability to climb a tree, it will live its whole life believing that it is stupid. –

Albert Einstein

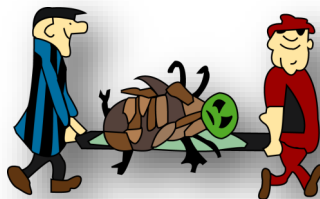
RECIPE FOR A PEST-FREE HOLIDAY SEASON

- ◆ Call **ADVANCE Termite & Pest Control**:
620.662.3616 or 800.536.3614;
or
- ◆ e-mail **ADVANCE Termite & Pest Control**:
(helen@advancepest.com;
kim@advancepest.com; jo-
lene@advancepest.com;
stephani@advancepest.com
- ◆ or sheley@advancepest.com) to
- ◆ Schedule an appointment for a general pest control service or rodent control service with one of our jolly technicians; and then
- ◆ Relax and enjoy your holidays!

**MERRY CHRISTMAS
AND HAPPY NEW
YEAR FROM ALL OF
US AT ADVANCE!**

ADVANCE Termite & Pest Control, Inc.

2515 E. 14th Avenue
Hutchinson KS 67501
620.662.3616
800.536.3614
FAX: 620.662.0252



We're on the web!
www.advancepest.com

PROTECTING YOUR HOME FROM WINTER RODENT INFESTATIONS

It feels like chilly weather is here to stay, and with the arrival of cooler temperatures comes the reemergence of one of the most common cold-weather home invaders—rodents.

Rodents are notorious carriers of illnesses and bacteria, and a buildup of their droppings can worsen asthma and allergy symptoms. They can chew through drywall, insulation, wood and electrical wiring, increasing the potential risk for fires. Mice are able to fit through openings the size of a dime and rats a quarter, though through their gnawing they can gain access through even smaller openings.

Some rodent prevention tips:

- Check both the inside and outside of your home for cracks or crevices, and seal any openings with caulk, steel wool, or both. Pay special attention to areas where utilities and pipes enter the home.
- Replace loose mortar and weather stripping around the basement foundation and windows.
- Screen vents and openings to chimneys.
- Store firewood at least 20 feet from the home and five feet off the ground. Keep shrubbery and tree branches cut back from the house.
- Keep basements and attics clear and store boxes off of the floor. Eliminate all moisture sites, including leaking pipes and clogged drains.
- Keep food in airtight containers and dispose of garbage regularly.



Overwintering Pests

For insects, winter is a challenging proposition and in some species the thought is enough to drive them indoors for protection from the elements. Pests will begin to secure themselves in early fall, well before temperatures drop dangerously low. A variety of pests will overwinter, including invasive species like spiders, stink bugs, beetles and flies. Most overwintering pests make themselves known as they transition from a spring and summer environment to a home by massing in sometimes staggering numbers of exterior walls. Typically, south and west facing walls are more likely to attract potential overwintering pests due to the accumulated warmth from sunshine throughout the day.

Make sure to discuss this issue with your professional technician so that he/she can pay special attention to these areas during treatment of your home this winter.



THE SLEEP TIGHT FOUNDATION

was established in 2018 to help folks with the costs required for eradication of bed bug infestations because

Bed Bugs Bite

(Actually, They Suck!)



Bed bug infestations are having a severe social, economic and emotional impact on our community and surrounding communities and many of our neighbors do not have the funds to pay for treatment of their homes for bed bugs.

The Sleep Tight Foundation is currently soliciting funds to help those who are unfortunate enough to experience a bed bug infestation, but are unable to pay all or a portion of the costs required for remediation of the issue.

The Foundation would be grateful for any amount you are able to give and because the Sleep Tight Foundation is a 501(c)(3) corporation, your donation is tax-deductible.

Your donations can be mailed to:

P O Box 1202, Hutchinson KS 67504-1202



This newsletter is intended to bring you information to make your life easier and more enjoyable. We would appreciate your passing this newsletter along to neighbors, friends and relatives who might need our services.

We love to hear from our customers. If you have any questions, concerns or comments, please contact our office at 620.662.3616 or 800.536.3614) or e-mail us at advance@advancepest.com. Please be kind—we're very sensitive!